

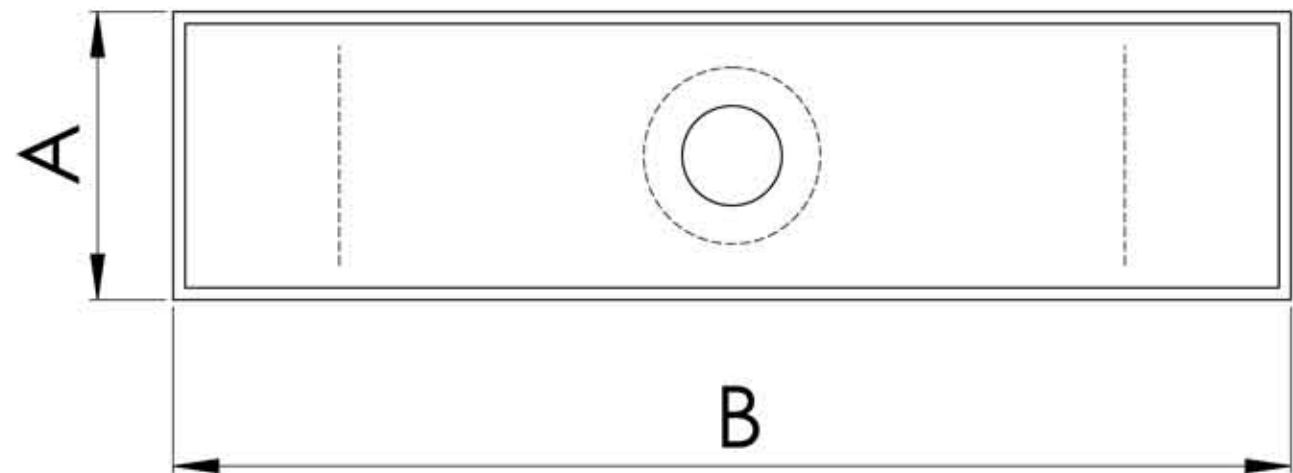
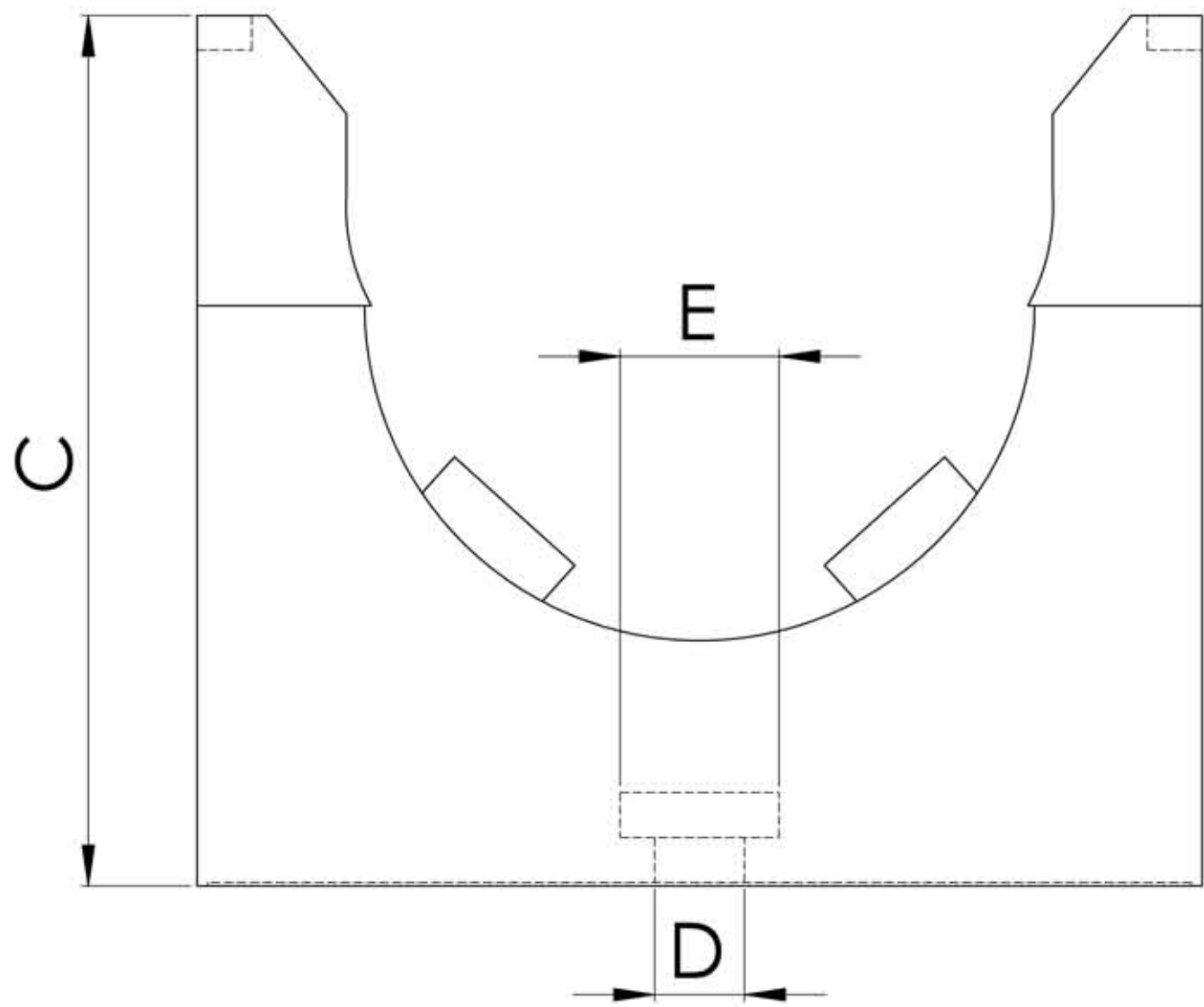
4

3

2

1

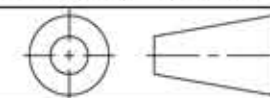
| PART NUMBERS BRACKET | FIT NOMINAL CONDUIT SIZE | DIMENSIONS INCHES (MM) | | | | |
|----------------------|--------------------------|------------------------|-----------|-----------|--------------|---------------------|
| | | A Width | B Length | C Height | D Mfg Hole Ø | E Mfg Hole Recess Ø |
| MB-09-BK | 10 | .47 (12) | 1.18(30) | .91(23) | .17 (4.4) | .30(7.6) |
| MB-11-BK | 12 | .47 (12) | 1.18(30) | .91(23) | .17 (4.4) | .30(7.6) |
| MB-16-BK | 17 | .59(15) | 1.38(35) | 1.18(30) | .21 (5.3) | .37(9.4) |
| MB-21-BK | 23 | .63(16) | 1.65(42) | 1.50(38) | .26 (6.5) | .45 (11.5) |
| MB-29-BK | 29 | .63(16) | 1.97 (50) | 1.69 (43) | .26 (6.5) | .46(11.7) |
| MB-36-BK | 37 | .71(18) | 2.40(61) | 2.01(51) | .26 (6.5) | .46(11.7) |
| MB-48-BK | 50 | .75(19) | 2.91(74) | 2.52(64) | .26 (6.5) | .46(11.7) |



NOTES:

- 1) GENERAL DIMENSIONS DRAWINGS.
- 2) DIMENSIONS [] ARE IN MILLIMETER.
- 3) DIMENSIONS NOTED ARE FOR REFERENCE ONLY.

Third angle projection



7374 S. EAGLE STREET
 CENTENNIAL, CO 80112-4221 USA
 TOLL FREE: 1-800-456-9012
 PHONE: 303-699-1135
 EMAIL: info@SealconUSA.com
 WEBSITE: www.SealconUSA.com



4

3

2